

CSK Antibody (N-term)
Purified Rabbit Polyclonal Antibody (Pab)
Catalog # AP21597a**Specification**

CSK Antibody (N-term) - Product Information

Application	WB,E
Primary Accession	P41240
Reactivity	Human, Mouse, Rat
Host	Rabbit
Clonality	polyclonal
Isotype	Rabbit IgG
Calculated MW	50704

CSK Antibody (N-term) - Additional Information**Gene ID** 1445**Other Names**

Tyrosine-protein kinase CSK, C-Src kinase, Protein-tyrosine kinase CYL, CSK

Target/Specificity

This CSK antibody is generated from a rabbit immunized with a KLH conjugated synthetic peptide between 17-51 amino acids from the N-terminal region of human CSK.

Dilution

WB~~1:2000

E~~Use at an assay dependent concentration.

Format

Purified polyclonal antibody supplied in PBS with 0.09% (W/V) sodium azide. This antibody is purified through a protein A column, followed by peptide affinity purification.

Storage

Maintain refrigerated at 2-8°C for up to 2 weeks. For long term storage store at -20°C in small aliquots to prevent freeze-thaw cycles.

Precautions

CSK Antibody (N-term) is for research use only and not for use in diagnostic or therapeutic procedures.

CSK Antibody (N-term) - Protein Information**Name** CSK

Function Non-receptor tyrosine-protein kinase that plays an important role in the regulation of cell growth, differentiation, migration and immune response. Phosphorylates tyrosine residues located in the C- terminal tails of Src-family kinases (SFKs) including LCK, SRC, HCK, FYN, LYN, CSK

or YES1. Upon tail phosphorylation, Src-family members engage in intramolecular interactions between the phosphotyrosine tail and the SH2 domain that result in an inactive conformation. To inhibit SFKs, CSK is recruited to the plasma membrane via binding to transmembrane proteins or adapter proteins located near the plasma membrane. Suppresses signaling by various surface receptors, including T-cell receptor (TCR) and B-cell receptor (BCR) by phosphorylating and maintaining inactive several positive effectors such as FYN or LCK.

Cellular Location

Cytoplasm. Cell membrane. Note=Mainly cytoplasmic, also present in lipid rafts

Tissue Location

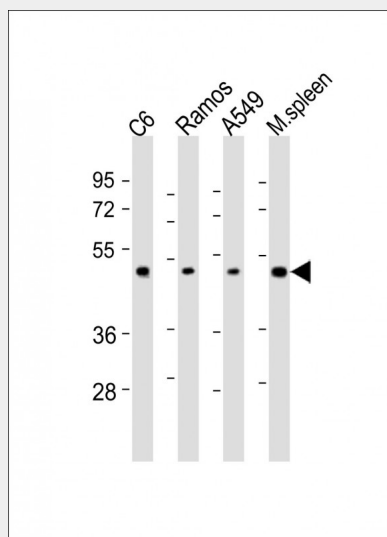
Expressed in lung and macrophages.

CSK Antibody (N-term) - Protocols

Provided below are standard protocols that you may find useful for product applications.

- [Western Blot](#)
- [Blocking Peptides](#)
- [Dot Blot](#)
- [Immunohistochemistry](#)
- [Immunofluorescence](#)
- [Immunoprecipitation](#)
- [Flow Cytometry](#)
- [Cell Culture](#)

CSK Antibody (N-term) - Images



All lanes : Anti-CSK Antibody (N-term) at 1:2000 dilution Lane 1: C6 whole cell lysates Lane 2: Ramos whole cell lysates Lane 3: A549 whole cell lysates Lane 4: mouse spleen lysates Lysates/proteins at 20 µg per lane. Secondary Goat Anti-Rabbit IgG, (H+L), Peroxidase conjugated at 1/10000 dilution. Predicted band size : 51 kDa Blocking/Dilution buffer: 5% NFDM/TBST.

CSK Antibody (N-term) - Background

Non-receptor tyrosine-protein kinase that plays an important role in the regulation of cell growth, differentiation, migration and immune response. Phosphorylates tyrosine residues located in the

C-terminal tails of Src-family kinases (SFKs) including LCK, SRC, HCK, FYN, LYN or YES1. Upon tail phosphorylation, Src-family members engage in intramolecular interactions between the phosphotyrosine tail and the SH2 domain that result in an inactive conformation. To inhibit SFKs, CSK is recruited to the plasma membrane via binding to transmembrane proteins or adapter proteins located near the plasma membrane. Suppresses signaling by various surface receptors, including T- cell receptor (TCR) and B-cell receptor (BCR) by phosphorylating and maintaining inactive several positive effectors such as FYN or LCK.

CSK Antibody (N-term) - References

Partanen J.,et al.Oncogene 6:2013-2018(1991).
Braeuninger A.,et al.Proc. Natl. Acad. Sci. U.S.A. 88:10411-10415(1991).
Brauninger A.,et al.Gene 110:205-211(1992).
Braeuninger A.,et al.Oncogene 8:1365-1369(1993).
Halleck A.,et al.Submitted (JUN-2004) to the EMBL/GenBank/DDBJ databases.